

Strength engineered. Excellence delivered.

# ADHPRUFE

## ADVANCED WATERPROOFING SYSTEM

2 COMPONENT ELASTIC WATERPROOFING



WATERPROOF PROTECTION



CRACK BRIDGING



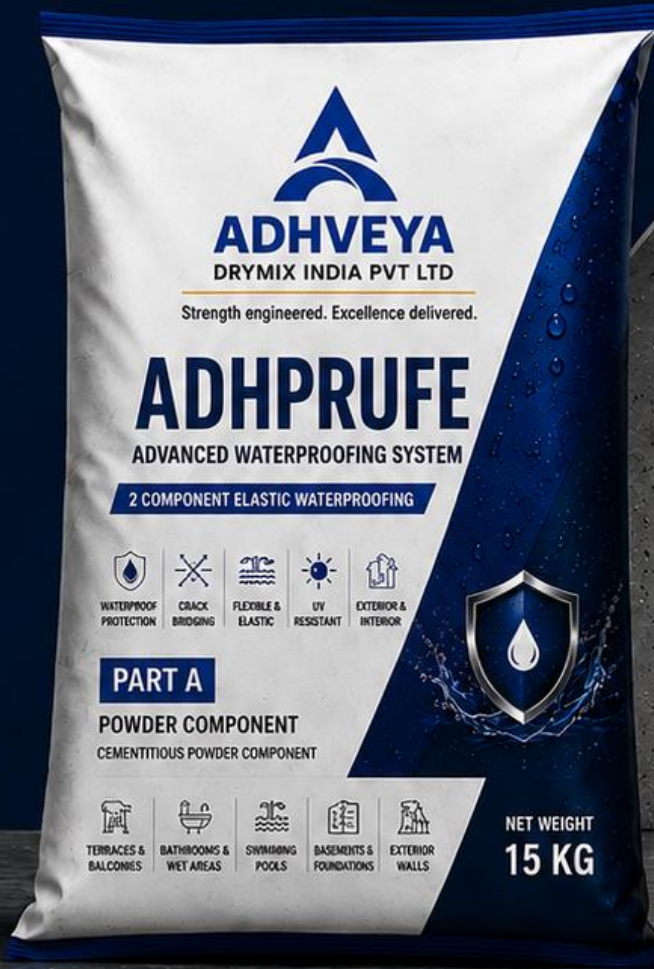
FLEXIBLE & ELASTIC



UV RESISTANT



EXTERIOR & INTERIOR



STRENGTH ENGINEERED. EXCELLENCE DELIVERED.



HIGH QUALITY



PREMIUM PERFORMANCE



TRUSTED BY PROFESSIONALS



CERTIFIED COMPANY

# ADHPRUFE

## ADVANCED WATERPROOFING SYSTEM

### 2 COMPONENT ELASTIC WATERPROOFING

## WHO WE ARE

Adhveya is a leading manufacturer of high-performance construction chemicals and drymix solutions. Built on a foundation of innovation, quality and trust, we deliver products that enhance the strength, durability and reliability of modern construction.

With state-of-the-art manufacturing, stringent quality control and a customer-first approach, we partner in building structures that stand the test of time.

## WHY ADHVEYA?



### ENGINEERED FOR EXCELLENCE

Advanced formulations designed for superior performance and long-lasting protection.



### UNCOMPROMISED QUALITY

Manufactured under strict quality standards to ensure consistency and reliability.



### INNOVATIVE SOLUTIONS

Continuous research and innovation to meet evolving construction needs.



### TRUSTED PARTNER

Strong relationships built on transparency, honesty and dedicated support.



### BUILT FOR DURABILITY

Solutions that enhance the life, safety and



# ONE SOLUTION. MULTIPLE APPLICATIONS.

AdhPrufe is a versatile, two-component waterproofing system designed to provide seamless protection across a wide range of areas. From exposed terraces to submerged structures, it creates a durable, elastic barrier against water ingress and environmental damage.



## TERRACE

Protection from rain, UV rays and temperature variations.



**COMPLETE PROTECTION.  
EVERY SURFACE.**



## BATHROOM

Ideal for floors and walls in wet areas.



## SWIMMING POOL

Provides reliable waterproofing for pools, decks and surrounding areas.



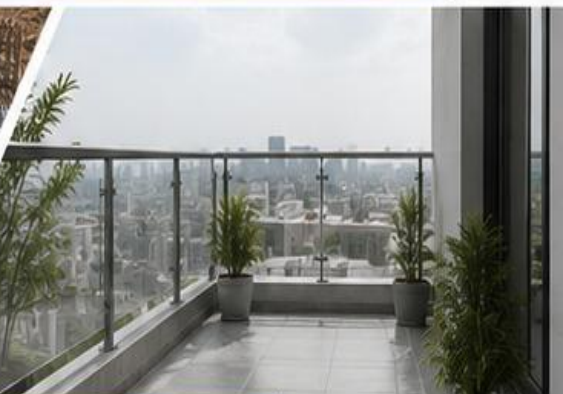
## WATER TANK

Safe for potable water storage and ensures zero leakage.



## FOUNDATION

Protects below-grade structures from moisture and groundwater.



## BALCONY

Shields outdoor spaces from water penetration and wear.

# ADVANCED 2-COMPONENT ELASTIC TECHNOLOGY

AdhPrufe is a high performance, two component waterproofing system. The perfect combination of cementitious polymer and advanced liquid polymer creates a flexible, seamless and durable waterproof membrane that protects structures from water ingress, cracks and harsh environmental conditions.



**PART A**  
POWDER COMPONENT  
15 KG BAG

**PART B**  
LIQUID COMPONENT  
5 KG CAN

## EASY TO MIX. EASY TO APPLY.

When Part B (Liquid) is mixed with Part A (Powder), a smooth, lump-free mix is formed which is easy to apply by brush, roller or squeegee.



**PART A**  
POWDER COMPONENT

+



**PART B**  
LIQUID COMPONENT

=



**MIXED ADHPRUFE**  
SMOOTH, UNIFORM  
WATERPROOF COATING

- ✓ Easy Mixing
- ✓ Excellent Workability
- ✓ Brush / Roller / Squeegee Application
- ✓ Seamless Protection

## COMPLETE WATERPROOFING SYSTEM

AdhPrufe forms a seamless and elastic membrane that bridges cracks and provides long lasting waterproof protection.

**TILE FINISH**  
Tile / Stone

**TILE ADHESIVE**  
High Performance Tile-Fix Adhesive

**ADHPRUFE**  
Second Coat

**ADHPRUFE**  
First Coat with Mesh

**POLYESTER MESH**  
Reinforcement Layer

**PRIMER**  
Surface Primer

**SUBSTRATE**  
Concrete Substrate



## SEAMLESS PROTECTION FROM THE INSIDE OUT



**WATERPROOF BARRIER**  
Prevents water penetration and moisture damage.



**CRACK BRIDGING**  
Elastic formulation bridges hairline cracks and movement joints.



**STRONG ADHESION**  
Bonds strongly to concrete, plaster, masonry and more.



**DURABLE & LONG LASTING**  
Resists water pressure, chemicals, UV rays and weathering.

# ENGINEERED FOR EXTREME PROTECTION.

AdhPrufe is formulated with advanced polymer technology to deliver a tough, flexible and seamless waterproof layer that outperforms conventional systems in every condition.



## CRACK BRIDGING

Bridges static and dynamic cracks up to 1.0 mm and prevents water ingress effectively.



## UV RESISTANT

Protects the waterproof layer from degradation due to harsh sunlight and extreme weather.



## WATER PRESSURE RESISTANCE

Withstands water pressure and remains impermeable even in challenging conditions.



## FLEXIBLE & ELASTIC

Elongates with the surface movement and returns to its original shape without damage.



## HIGH ADHESION

Excellent adhesion to a wide range of substrates for long-term performance.



## LONG LASTING PROTECTION

Provides durable, maintenance free and long-term waterproofing protection you can rely on.



## CRACK BRIDGING

Elastic formulation bridges hairline cracks and movement joints, preventing water ingress and ensuring long-term durability.



## UV RESISTANT

Special polymer technology provides excellent resistance against UV rays and weathering.



## WATER PRESSURE RESISTANCE

Withstands hydrostatic pressure and prevents water penetration even in negative side applications.



## FLEXIBLE & ELASTIC

Highly flexible membrane accommodates structural movement and thermal expansion without cracking.



## HIGH ADHESION

Strong bonding with concrete, plaster, masonry, metal and other substrates for long lasting performance.



## LONG LASTING PROTECTION

Resists water, chemicals, weathering and aging –



# COMPLETE TERRACE WATERPROOFING SYSTEM

AdhPrufe creates a seamless, elastic waterproof barrier that protects terraces from water ingress, weathering and structural movement while ensuring strong bonding for tile finishes.



**100% WATERPROOF**  
Seamless membrane prevents water penetration.



**CRACK BRIDGING**  
Bridges cracks and accommodates movement.

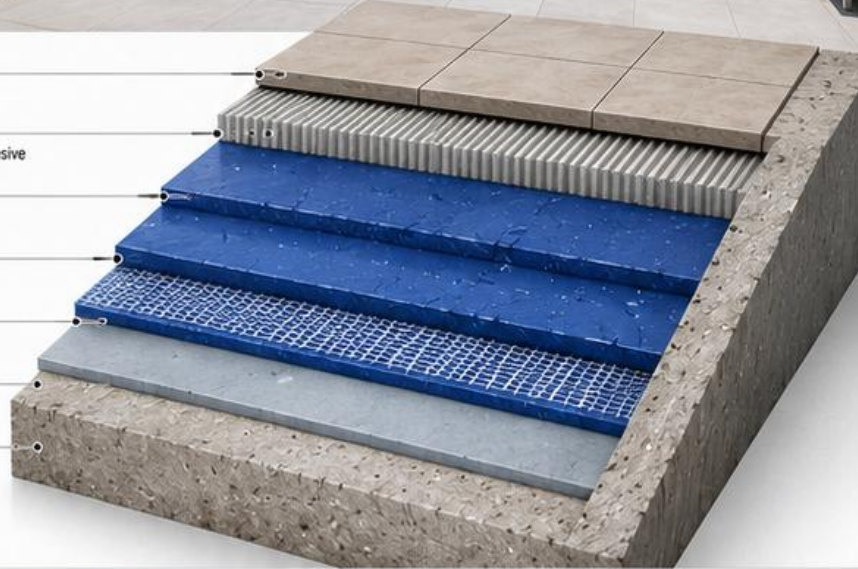


**UV & WEATHER RESISTANT**  
Withstands harsh sunlight, rain and temperature changes.



**STRONG ADHESION**  
Excellent bond with substrates and tile adhesives.

- 06 TILE FINISH**  
Tile / Stone
- 05 TILE ADHESIVE**  
High Performance Tile-Fix Adhesive
- 04 ADHPRUFE**  
Second Coat
- 03 ADHPRUFE**  
First Coat with Mesh
- 02 POLYESTER MESH**  
Reinforcement Layer
- 01 PRIMER**  
Surface Primer
- 00 SUBSTRATE**  
Concrete Substrate



# BATHROOM & WET AREA WATERPROOFING

Ideal for bathrooms, toilets, kitchens and other wet areas. AdhPrufe forms a durable and flexible waterproof layer under tiles that keeps surfaces dry and hygienic.



**WATERPROOF BARRIER**  
Protects against seepage and moisture damage.



**MOISTURE & MOLD RESISTANT**  
Prevents dampness, mold and bacterial growth.



**FLEXIBLE & DURABLE**  
Withstands repeated wetting, drying and temperature variations.



**PERFECT UNDER TILE**  
Ensures strong adhesion and long-lasting tile performance.

- TILE FINISH**  
Tile / Stone
- TILE ADHESIVE**  
High Performance Tile-Fix Adhesive
- ADHPRUFE**  
Second Coat
- ADHPRUFE**  
First Coat with Mesh
- POLYESTER MESH**  
Reinforcement Layer
- PRIMER**  
Surface Primer
- SUBSTRATE**  
Concrete Substrate

## IDEAL FOR



Terraces & Rooftops



Bathrooms & Toilets



Kitchens & Wet Areas



Balconies & Podiums



Planters & Flower Beds



Water Tanks & Sumps

## ONE SYSTEM. COMPLETE PROTECTION.



WATERPROOF



CRACK BRIDGING



FLEXIBLE & ELASTIC



STRONG ADHESION



UV & WEATHER RESISTANT



LONG LASTING PERFORMANCE

# SWIMMING POOL & WATER TANK PROTECTION

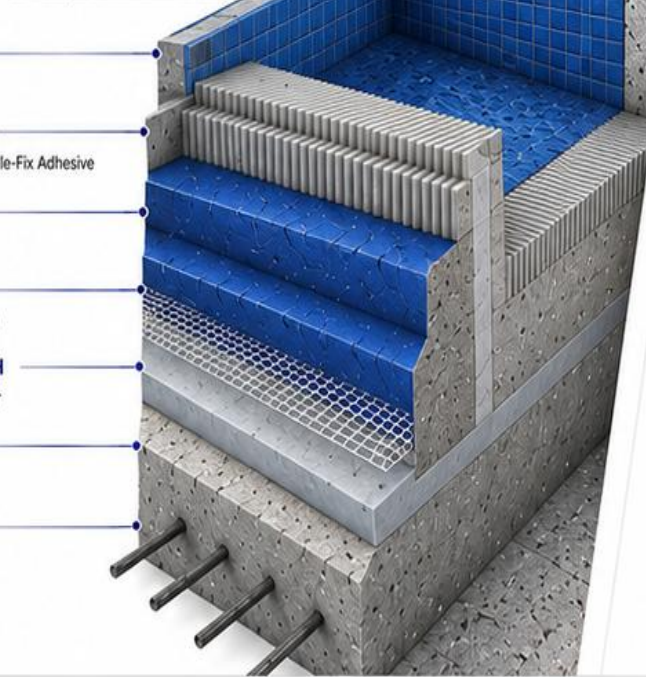
**BUILT TO WITHSTAND WATER.  
BUILT TO LAST.**

AdhPrufe provides a continuous, seamless and durable waterproof barrier for swimming pools, water tanks and other immersed structures. It resists continuous water pressure and prevents leakage for years.

- 
**100% WATERPROOF**  
 Creates a seamless barrier that prevents leakage even under continuous water pressure.
- 
**CHLORINE & CHEMICAL RESISTANT**  
 Withstands pool chemicals and ensures long-term durability.
- 
**EXCELLENT ADHESION**  
 Strong bonding on concrete and masonry substrates.
- 
**LONG LASTING PROTECTION**  
 High durability and resistance to ageing, ensuring trouble-free performance.



- TILE FINISH**  
Tile / Mosaic
- TILE ADHESIVE**  
High Performance Tile-Fix Adhesive
- ADHPRUFE**  
Second Coat
- ADHPRUFE**  
First Coat with Mesh
- POLYESTER MESH**  
Reinforcement Layer
- PRIMER**  
Surface Primer
- SUBSTRATE**  
Concrete Substrate



## IDEAL FOR





- 
**SWIMMING POOLS**
- 
**WATER TANKS (OVERHEAD & UNDERGROUND)**
- 
**SUMP TANKS & COLLECTION TANKS**
- 
**FOUNTAINS & WATER FEATURES**

# CRACK BRIDGING TECHNOLOGY

**FLEXIBLE PROTECTION THAT MOVES WITH THE STRUCTURE.**

AdhPrufe's advanced elastic formulation bridges cracks and movement joints, preventing water ingress and protecting the structure from future damage.



- 
**BRIDGES CRACKS**  
 Bridges static and dynamic cracks up to 1.0 mm without losing waterproofing efficiency.
- 
**FLEXIBLE & ELASTIC**  
 Elongates with the structure movement and returns to its original shape.
- 
**PREVENTS WATER INGRESS**  
 Blocks water penetration even when cracks reappear due to structural movement.
- 
**PROTECTS STRUCTURE**  
 Enhances durability and extends the life of the structure.

## HOW IT WORKS



### 1 CRACK OCCURS

Due to structural movement or shrinkage.

### 2 ADHPRUFE BRIDGES THE CRACK

The elastic membrane spans the crack and prevents water from penetrating.

### 3 LONG TERM PROTECTION

Even if the crack moves, AdhPrufe keeps the surface waterproof and protected.

## TESTED. TRUSTED. PROVEN.

- 
**LAB TESTED**  
 For crack bridging and waterproofing performance.
- 
**WATER PRESSURE RESISTANT**  
 Withstands hydrostatic pressure and prevents leakage.
- 
**LONG LASTING DURABILITY**  
 Built to perform for years in harsh conditions.

# CRACK BRIDGING TECHNOLOGY

FLEXIBLE. RELIABLE. CRACK RESISTANT.

AdhPrufe is engineered with advanced polymer technology that bridges existing cracks and prevents new ones from reflecting on the surface.



## BRIDGES HAIRLINE CRACKS

Effectively bridges static cracks up to 2mm.



## FLEXIBLE & ELASTIC

Accommodates structural movement and substrate expansion.



## PREVENTS CRACK REFLECTION

Forms a seamless barrier that prevents cracks from reappearing on the surface.



## ENHANCES WATERPROOFING LIFE

Maintains the integrity of the waterproof layer even under stress.

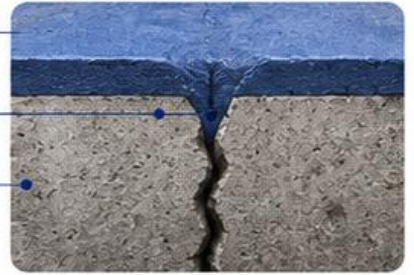


## HOW IT WORKS

AdhPrufe Elastic Layer

Bridges & Seals Crack

Concrete Substrate



## BUILT TO WITHSTAND MOVEMENT.

Delivers long lasting protection even in high stress and vibration prone areas.



## HIGH ELASTICITY

Adapts to structural movement



## WATER TIGHT SEAL

Blocks water even if cracks occur



## LONG TERM DURABILITY

Ensures lasting protection and peace of mind

# APPLICATION PROCESS

SIMPLE STEPS. STRONG PROTECTION.

AdhPrufe is easy to apply with a smooth 3 step process for effective and durable waterproofing.



## PREPARE SURFACE

- Clean the surface thoroughly.
- Remove dust, dirt, oil, grease and loose particles.
- Ensure the surface is dry, sound and free from cracks.
- For best results, pre wet the surface.



## APPLY ADHPRUFE

- Stir AdhPrufe well before use.
- Apply using a brush, roller or spray.
- Apply first coat evenly.
- Allow it to dry (2-4 hours).
- Apply second coat perpendicular to the first.



## ALLOW TO CURE

- Allow 24-48 hours for full curing.
- Protect the surface from water exposure during curing.
- Now the surface is ready for long lasting waterproofing protection.

## APPLICATION TIPS



### IDEAL TEMPERATURE

Apply between 10°C to 45°C.



### SURFACE MOISTURE

Surface should be saturated surface dry.



### RECOATING TIME

Apply second coat after 2-4 hours.



### CURING TIME

Allow 24-48 hours for full curing.



## COVERAGE

1 kg covers 4-5 sq.ft. per coat  
(Depending on surface condition)

For best performance,  
apply minimum 2 coats.



## SIMPLE TO APPLY. BUILT TO PROTECT.

Follow these steps for a seamless waterproofing solution that lasts for years.

# BUILT TO PROTECT. ENGINEERED TO LAST.

AdhPrufe delivers advanced waterproofing solutions that stand the test of time and conditions.

## KEY BENEFITS AT A GLANCE



### COMPLETE WATERPROOFING

Provides a seamless waterproof barrier that protects structures from water ingress.



### STRONG ADHESION

Excellent bond strength with concrete and various substrates.



### CRACK BRIDGING

Bridges static cracks up to 2mm and prevents water seepage.



### WATER & MOISTURE RESISTANT

Ensures long lasting protection in wet and damp conditions.



### LONG TERM DURABILITY

Resistant to weather, UV and aging for extended performance.



### SAFE & ECO FRIENDLY

Low VOC, non-toxic and safe for applicators and the environment.



#### WORKING TIME:

As per product specification.



#### TEMPERATURE:

Apply between 5°C to 35°C.



#### CURING TIME:

Allow 24 hours before next coat or exposure.



#### NOTE:

Results may vary depending on substrate, tile type and site conditions and application method.



## MANUFACTURED BY:

### ADHVEYA DRYMIX INDIA PVT LTD

KUBER INDUSTRIAL PARK  
VALSAD, GUJARAT, INDIA



adhveya@gmail.com



www.adhveya.com | www.adhveya.in